

Innovating Our Streets For Our People

OVERVIEW

November 2020

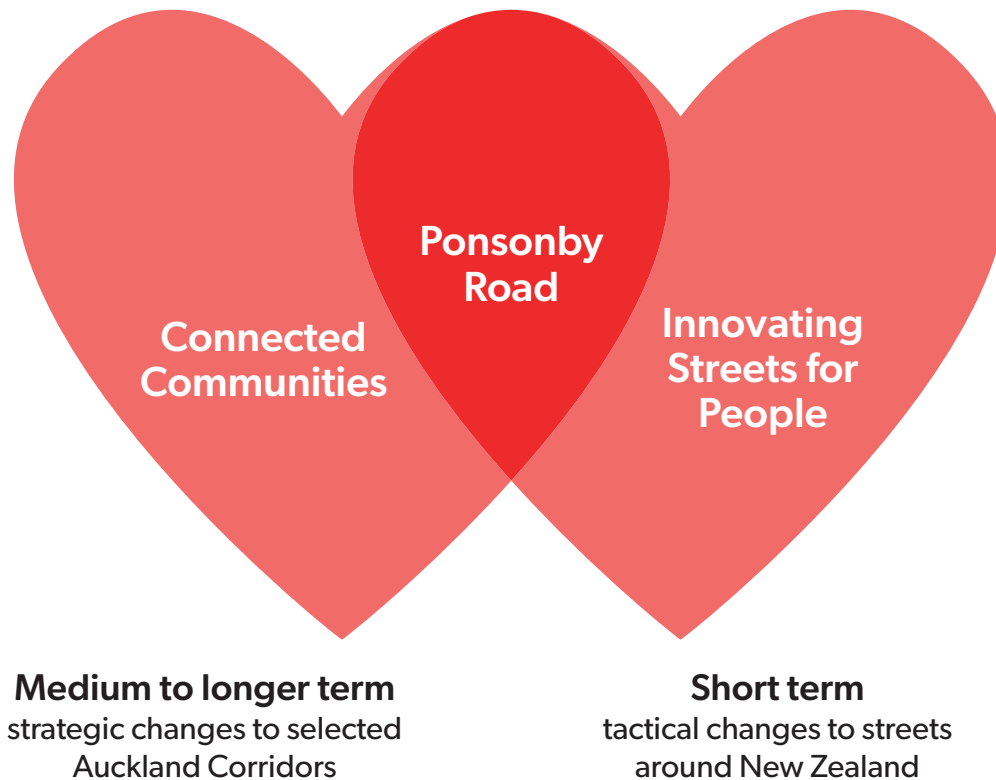


#onlyponsonby



Ponsonby Road in Context

Ponsonby Road is in both the Connected Communities and Innovating Streets for People programmes



The Connected Communities Programme brings together bus, cycling, walking and road safety projects to improve service along select corridors across Auckland, including Ponsonby Road.

It is also a mechanism for place making initiatives through urban design elements that will reflect local identity and character.

A business case for Ponsonby Road is currently underway to identify, plan and programme changes to the corridor in the medium to longer term.

The Innovating Streets project gives us the opportunity to try out something bold and innovative with the community in the short term before we commit to any longer-term changes.



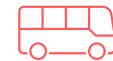
Current Use



City Centre and fringe area populations are expected to increase by 58,000 people in the next 30 years



25,000 vehicles per day travel along Ponsonby Road (Picton Street to Newton Road)



Up to 44 buses per hour operate along the corridor during peak times, with this expected to increase to 60 buses per hour by 2028



11 DSI (Death or Serious Injury) crashes occurred along the corridor between 2014—2018, 72% of which involved vulnerable road users



Footpath surfaces are poor throughout the corridor - footpaths cracking, tree roots uplifting pavement, unexpected entrance ways and exits

How 'Innovating Streets for People' Works

- ♥ **AT has been awarded funding from Waka Kotahi NZ Transport agency to test ways to create a more vibrant and people friendly environment along Ponsonby Road.**
- ♥ **The changes have not been decided, but will be based on community feedback, and co-designed with an inclusive group of stakeholder representatives.**
- ♥ **The changes are expected to:**
 1. Respond to specific issues/opportunities identified by the community of people using Ponsonby Rd.
 2. Address one or more of the project's objectives:
 - Vibrancy – create a more vibrant environment for shoppers, residents, hospitality patrons, etc.
 - Safety – reduce the risk of transport related deaths and harm to users of Ponsonby Rd.
 - Access – increase the ease of access to Ponsonby Road by people of all ages and abilities.
 - Inform plans for longer term changes based on learnings from the changes.
- ♥ **The changes will be closely monitored to assess their performance in achieving the objectives.**
- ♥ **The changes are not permanent, and can be removed or altered if they do not perform as expected.**
- ♥ **Despite the temporary nature, the changes will be tasteful and in keeping with the character of Ponsonby Road.**

The Opportunity

Deliver towards the Ponsonby Road Plan 2014—2044 endorsed by the Waitematā Local Board



Recognise Ponsonby Road's diverse role as a vibrant centre, key entertainment and boutique-shopping locality that meets the needs of local residents, businesses and visitors.



Develop Ponsonby Road with various transport options that prioritise the safety of pedestrians and cyclists.



Ensure sufficient provision of open space and community facilities to meet the needs of the Ponsonby Community both now and in the future.



Protect, recognise and interpret the historic and cultural heritage of Ponsonby Road. This is an opportunity to tell stories



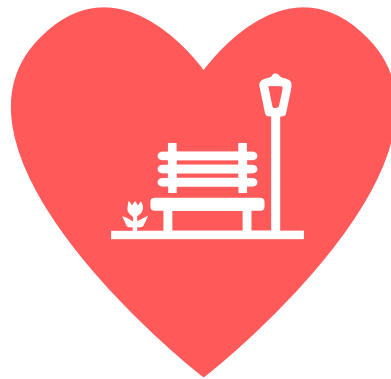
Contribute to the achievement of the region-wide improvements to the natural environment.



Project goals



Get **community buy-in** to the need to **change/reallocate** the Ponsonby Road space



Trial and test **temporary** interventions to **show us what works and doesn't work**

Project success



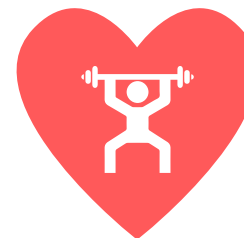
This project delivers **a stepping stone to future change**



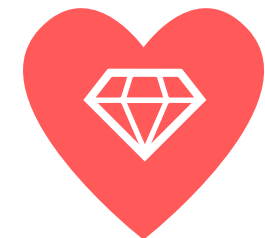
A strong relationship with the community is built



The community and stakeholders are **excited about project**



The community feels **empowered**



The community see the value and the **benefit in this project for them**



Focussing our Efforts

Tactical urbanism involves short-term (temporary) solutions to test permanent solutions.

Indicative timeline

Completion mid 2021
(Waka Kotahi funding requirement).

With the short time-frame and limited budget, we will need to focus our efforts. Some potential areas include:

- ♥ Three Lamps
- ♥ Ponsonby Franklin Rd to Mackelvie St Strip
- ♥ Western Park

Community Participation & Co-design

Auckland Transport wants to create a robust and authentic approach to co-design with input and participation from the community. Their current plan is to involve stakeholders as follows:

1. Public engagement to discover key issues/opportunities (face-to-face, online, pop-ups, leaflet drops)
2. Hands-on co-design with a representative group of 20 people in a series of workshops
3. Local sourcing where appropriate
4. Activation event to mark opening of changes
5. Ongoing monitoring and open to feedback, with budget to revise/reverse changes

The PBA has a key role to play in shaping Ponsonby's future – this is your chance to get involved!



How the Process Will Work

- ♥ Feedback will be collected from local community Groups, resident Associations and the PBA. Each group will seek feedback from their stakeholders via face-to-face meetings, intercept research, feedback on website etc
- ♥ Individuals from each of those groups will be encouraged to submit their feedback individually via the AT website
- ♥ Auckland Transport will confirm approximately 20 participants on the Co - Design group who have volunteered to represent the full cross section of our Ponsonby Community
- ♥ Tactical Urbanism Themes (reference page 11) and potential locations (examples page 7) will be agreed by the Co Design group based on feedback received
- ♥ All decisions will be shared at every stage of the process
- ♥ Ideas and designs for activations & initiatives to support the chosen theme/s and location will be canvassed from every group represented at the Co design 'table'
- ♥ The Co Design group will agree on activation design for implementation
- ♥ Results, feedback and learnings will be tracked and shared



How You Can Get Involved

- ♥ Join the workshop on 23 November at 5pm at Little Garden Café at the top of Franklin Road to be part of the PBA Submission
- ♥ Send your feedback to viv@iloveponsonby.co.nz to be included in the PBA Submission
- ♥ Contribute feedback via Social Pinpoint, accessed from the AT Website:
www.at.govt.nz/ponsonbyroad
- ♥ Contribute feedback via the AT Interactive PDF Questionnaire:
www.iloveponsonby.co.nz/innovating
- ♥ Email viv@iloveponsonby.co.nz to arrange a phone call or a face-to-face meeting

Ways to Achieve Tactical Urbanism For



Pedestrians



Cyclists



Place Activation

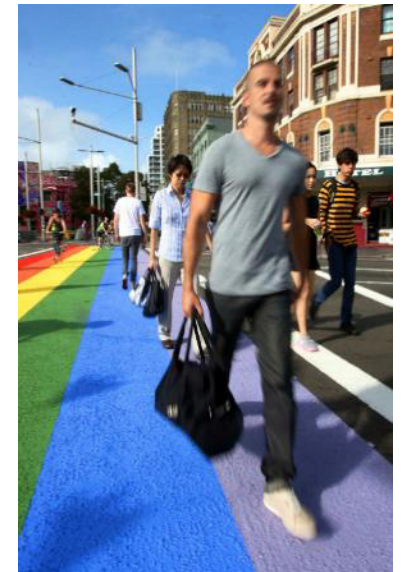
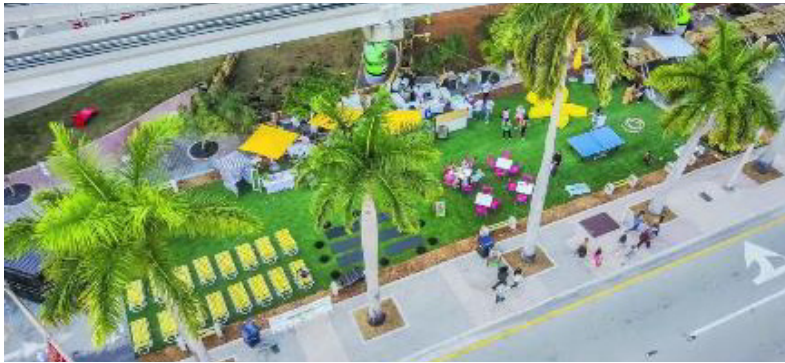


Reduce Traffic Volume



Reduce Traffic Speed

Examples of Tactical Urbanism



Get in touch

viv@iloveponsonby.co.nz

09 360 9301

www.iloveponsonby.co.nz



#onlyponsonby